



# EU Entry Exit System (EES)

## What you need to know....

**Toby Howe IEng MICE**

H&T Strategic Resilience Manager



# What is EES?

EES is a new electronic system that will collect and process data on the entry, exit, and refusal of third-country nationals crossing the external borders of the Schengen Area.

EES will be used by border guards and enforcement authorities to track the movements of non-EU citizens and to prevent irregular migration and security threats.



- EES is currently scheduled to be implemented in the Autumn of 2024, with **October 6th** being highlighted as a probable date.
- The Port of Dover and Eurotunnel have juxtaposed borders, meaning that at these two portals all checks are carried out this side of the Channel.
- Prior to a first crossing, all third-country nationals must register for the system, which includes providing biometric data such as a facial photograph and fingerprint identification.



- Under current plans, the registration must happen at the portal and must be supervised by officers from Police aux Frontières (PaF).
- Eurotunnel are developing a location within their site to be able to carry out registration.
- Port of Dover are continuing to develop plans, however, there is very limited space in the buffer zone between the Eastern Docks roundabout and the French Customs booths.



- Currently, the buffer zone within the Port is the only area where EES registration can be carried out.
- This could mean lengthy delays for all tourist traffic entering the Port.
- Any queuing tourist traffic outside the Port will impact the outbound freight (85% of which is from Schengen areas)
- Significant queuing could become very frequent at Kent borders with Europe



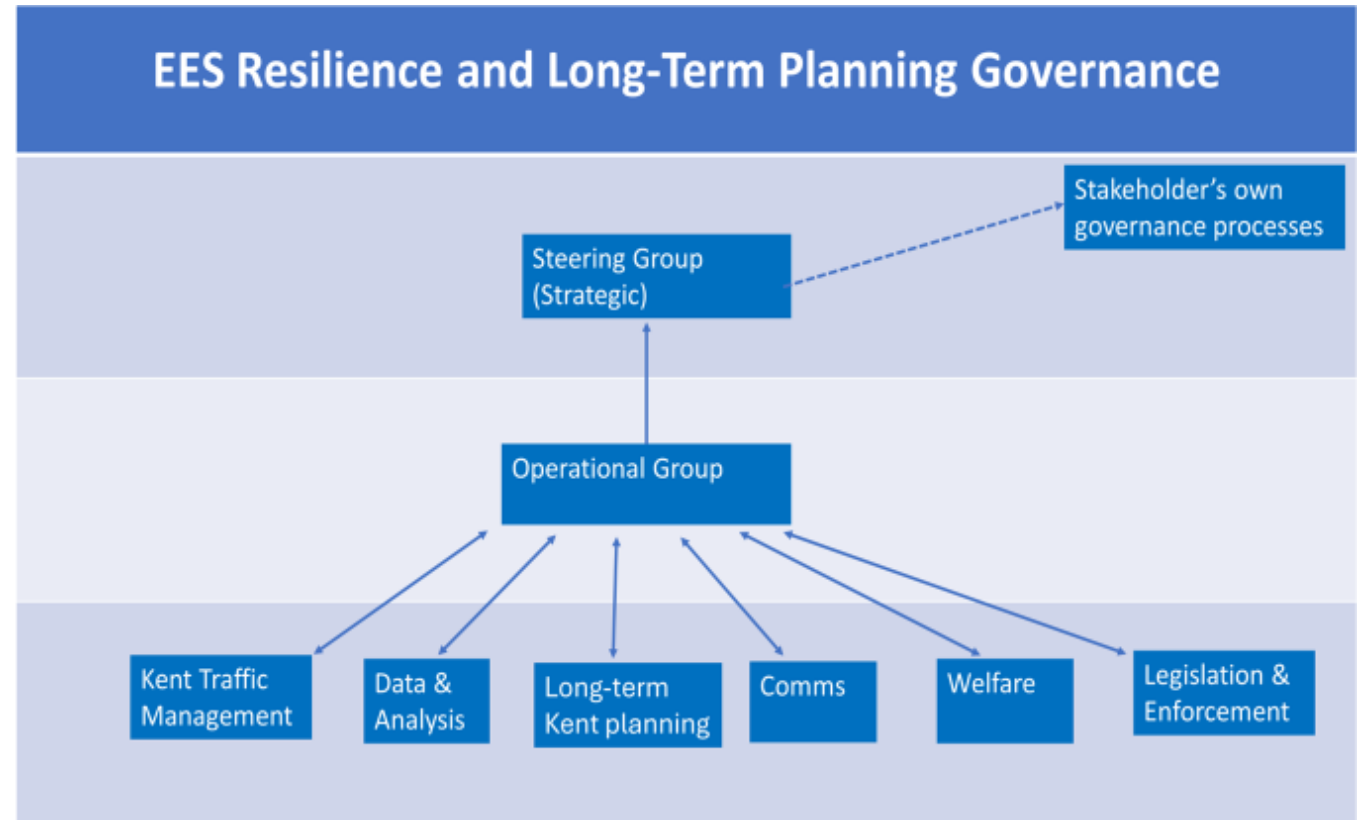


- Dover TAP and Operation Brock could become a more permanent feature, rather than only being deployed during peak times.



- Whilst remote registration is technologically possible it is not currently available.
- The EU is developing a ‘back-end’ solution for such a possibility but leaving the ‘front-end’ to countries and organisations.
- It is therefore unlikely that remote registration will be available for some time, due to EU legislation.

- Planning for the implementation of EES is ramping up across Whitehall and other bodies.
- Working with DfT, a number of Task and Finish Groups covering issues such as Traffic Management, Enforcement and Legislation and Welfare have been established.
- A multi-agency steering group will provide overview and an escalation forum.





The impact of EES on Kent is expected to be far greater than what was forecast for the exit from the EU.

EU Exit planning was focussed on delays to freight whereas the impact of EES will be an impact on travellers to the EU, as well as freight.

There is legislation in place to ensure that freight uses a prescribed route to the portals. It is not possible to legislate that passenger vehicles do the same.

